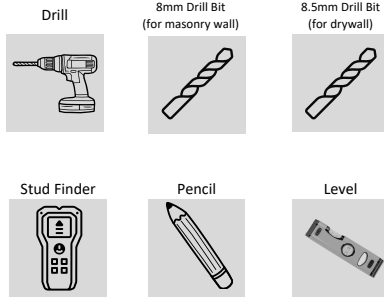


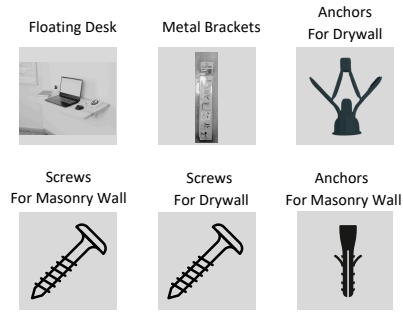
Floating Desk Install Guide



Required Installation Tools:



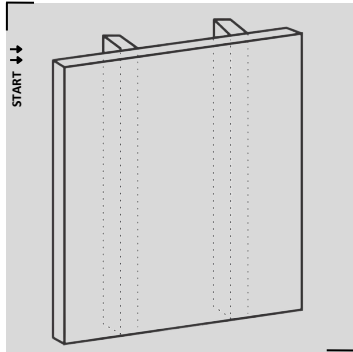
What's Included:



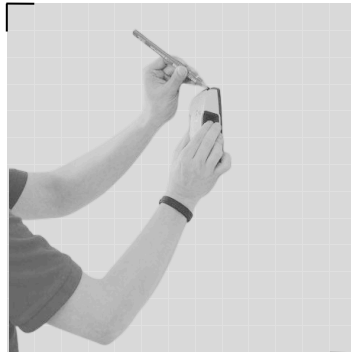
Still Need Help?

If you have any questions regarding the installation, please do not hesitate to contact us.

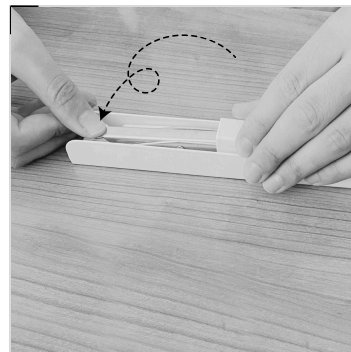
✉ info@hofina.com
 📷 [@hofinashop](https://www.instagram.com/hofinashop)



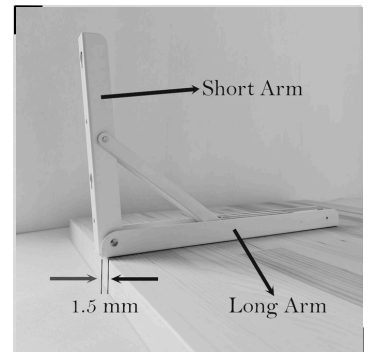
001 First: Determine your desired location for your desk.



002 Use a stud finder and pencil to mark the studs. If your wall is made of drywall, it is very important to mount the desk to the studs.



003 Press the area indicated by the arrow to bring the bracket to position 004. By pressing the section shown by the arrow, you can also adjust it to 60-70-80-90 degrees.



004 Make sure that the long arm is mounted to the desk and the short arm is mounted to the wall. There should be a 1.5 mm (0.06 inches) gap between the wall and the desk.



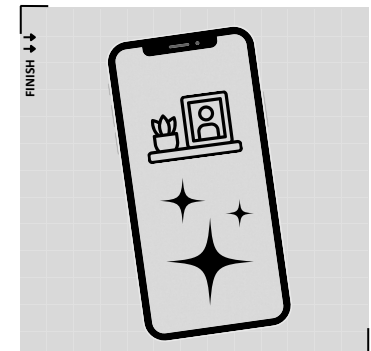
005 Attach the bracket to the desk using the shortest screws. There are four holes in the bracket. Secure at least two of them with a drill or screwdriver.



006 Mark the wall where the table will be hung with a pencil. If your wall is made of drywall, it is important for these sections to be studs.



007 If you are not mounting to a stud in your drywall, use the cream-colored anchors to secure it to the wall. If you have a brick wall, use the white anchors.



008 Congratulations! You've completed the project and deserve all the praise. Share a picture with us on Instagram at [@hofinashop](https://www.instagram.com/hofinashop) for a chance to win some awesome prizes!

Warnings:

① Weight Capacity

Overloading can lead to the desk falling or being damaged. When properly installed, the brackets have a total holding capacity of up to 250 kg (550 lbs).

③ Do Not Install Alone

For large and heavy pieces, it's recommended to have an assistant during installation. This increases safety and makes the process easier.

② Secure Installation

Ensure that all screws and connections are tight. A secure installation enhances the stability of the desk during use.

④ Cleaning and Maintenance

Use a soft cloth without chemicals for cleaning the floating desk. Avoid abrasive cleaners.