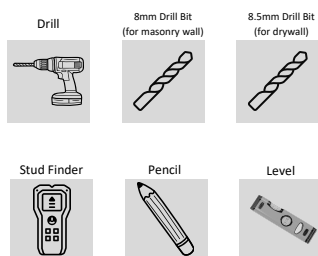


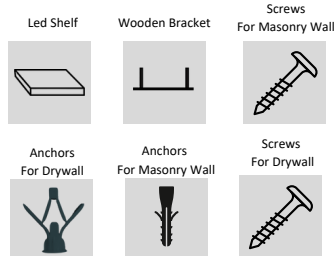
Hofina LED Shelf Install Guide



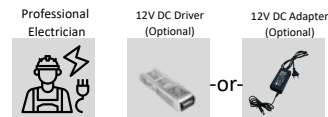
Required Installation Tools:



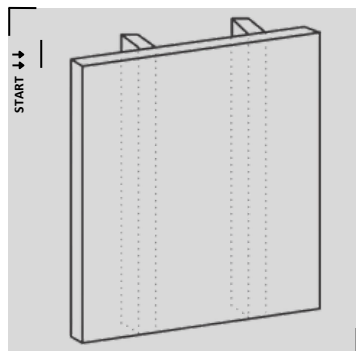
What's Included:



What You'll Need:

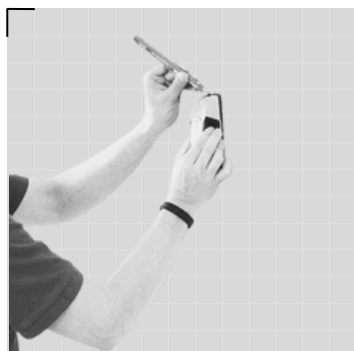


⚠ Step-by-Step Installation ⚠



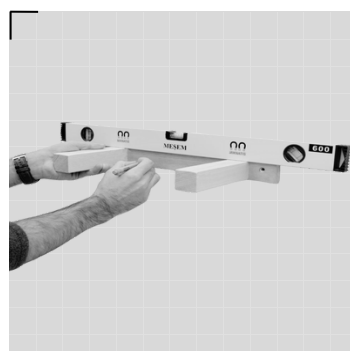
001

First: Determine your desired location for your shelf.



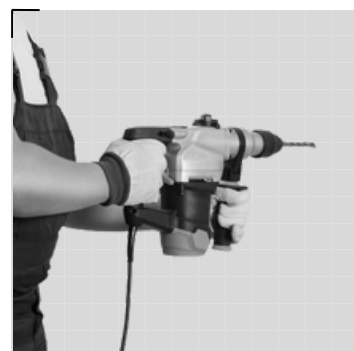
002

Mark the studs with the help of a pencil and a stud finder.



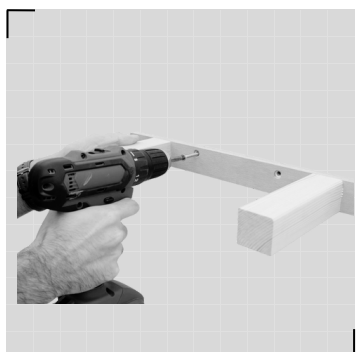
003

Please ensure the bracket is level using a spirit level. Mark the locations of the holes on the bracket and make sure to secure it to at least one stud.



004

If you are not mounting the bracket to a stud, you will need to use wall anchors. Drill holes suitable for your wall type (**drywall: 8.5mm, masonry wall: 8mm**) and insert the anchor.



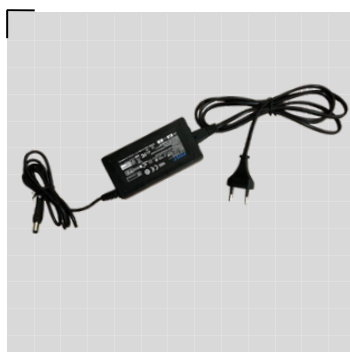
005

Secure your shelf to the wall using the screws suitable for your wall type.



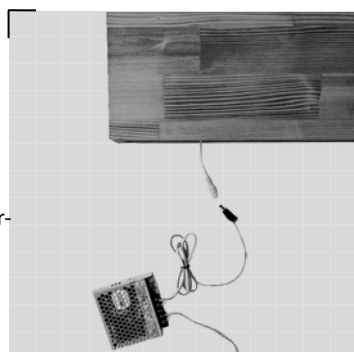
006

You may shorten the cable inside the shelf if you wish.



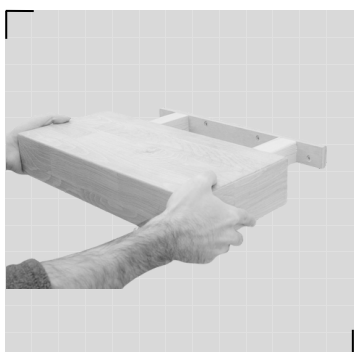
007-1

If you are going to use an adapter, please connect the adapter and plug converter. You can purchase it online through our store.



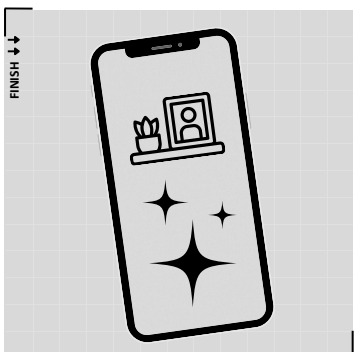
007-2

If a driver will be used, the electrician needs to connect the cable inside the shelf with the driver. You will need to provide this driver yourself.



008

Slide your shelf onto the bracket.



009

You finished this project and deserve heaps of adulation. Send us a picture on Instagram to: @hofinashop. Warning: rad prizes may apply!

Still Need Help?

If you have any questions regarding the installation, please do not hesitate to contact us.


✉ info@hofina.com
 📷 [@hofinashop](https://www.instagram.com/hofinashop)



Which adapter or transformer?

- 1 If you prefer an installation where the cables are not visible, the setup must be done using a 12V DC transformer, which you can purchase from hardware stores or online. Below is an example of a transformer that you can purchase.

Tools & Home Improvement > Lighting & Ceiling Fans > Lighting Accessories > Low Voltage Transformers



Karyoosi LED Power Supply 12V - LED Driver 12W 1A- 110V AC to 12V DC Converter for LED Strip, Spotlight Cabinet Lights, and Indoor Lighting
 Brand: Karyoosi
 4.5 ★★★★★ 23 ratings

\$9.98

FREE Returns

Coupon: ☐ Apply 10% coupon Shop items > | Terms

Save up to 4% with business pricing. Sign up for a free Amazon Business account

Get \$50 off instantly: Pay \$0.00 upon approval for Amazon Visa. No annual fee.

Model: 12V12W

12V12W	12V24W	12V36W	24V24W	24V36W
\$9.98	\$11.98	\$13.98	\$11.98	\$13.98

- 2 If you prefer a simpler installation where the cables remain visible, you should use a 12V DC adapter, which can be purchased from hardware stores or online. Below is an example of a transformer you can buy. Alternatively, you may also choose to purchase the 12V DC adapter directly from our online store.

Electronics > Power Accessories > AC Adapters



Belker 12V 1A AC DC Adapter Wall Charger Power Adapter Supply for 12 Volt Electronics - 1000mA Max.
 Visit the Belker Store
 4.3 ★★★★★ 269 ratings | 5 answered questions

-8% \$11.90

List Price: \$12.99

\$18.19 Shipping & Import Fees Deposit to Turkey Details

Save 5% on any 2 qualifying items

Use Amazon Currency Converter at checkout to pay for this item in your local currency. Terms & Conditions apply. Learn More

Brand: Belker
 Connector Type: Barrel Connector
 Compatible Devices: Tablets, Cctv ip camera, Dvd player, Etc.
 Special Feature: 12v 1000ma power supply, 12v 1000ma power adapter, 12 volts 1 amp power adapter, 12v 1a power supply, 12v 1a power adapter
 Input Voltage: 120 Volts (AC)
 Mounting Type: Wall Mount

Rad Tips

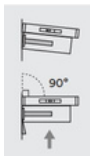
1 Plum, Square & Level



If your wall is not straight, use shims to ensure your bracket is installed straight across the wall face and square to the wall. The shelf & bracket will properly mate only if the bracket is straight and plum.



Your shelf should be level from front edge to the wall. If the shelf is still sagging, use shims to adjust the level of the bracket.

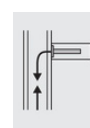


2 Studs & Blocking



Studs are the vertical 2x4 boards that make up the bones of your walls. They provide solid structure for your shelves to attach to. Blocking is typically added later between studs in the wall for additional support to mount shelves or hook to, and is usually made from 2x4 or 2x6 lumber.

3 Wiring Access



The wires of your LED shelf will need to be accessed by an electrician to connect power to your LED lights. Consult with a certified electrician before you complete the shelf install.

Warnings

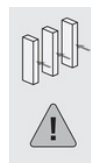
1 Certified Electrician Required For Install



You must work with a certified electrician to install this product. Failure to do so may result in damaged or a non-functioning product, or even electrical fire. Hof cannot be held responsible for any electrical work done, or any damage done to you or your home due to improper electrical work attempted. Get an electrician!



2 Use All Studs and/or Wall Blocking



Shelves must be correctly installed into studs or wall blocking. Failure to do so may result in sagging shelves, falling objects, or serious injury.