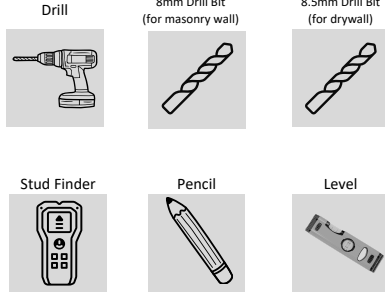


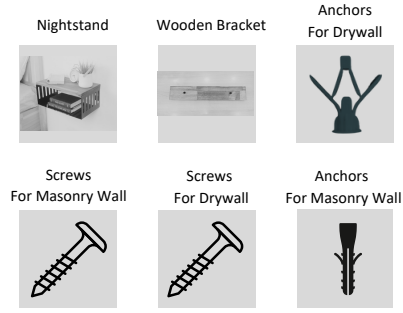
Hofina Metal Base Nightstand Install Guide



Required Installation Tools:



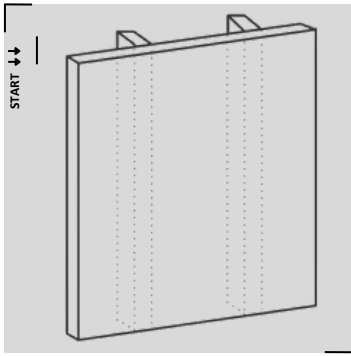
What's Included:



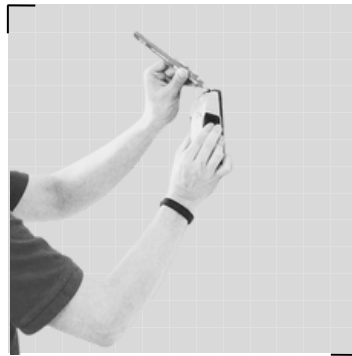
Still Need Help?

If you have any questions regarding the installation, please do not hesitate to contact us.

✉ info@hofina.com
 📷 [@hofinashop](https://www.instagram.com/hofinashop)



001 First: Determine your desired location for your nightstand.



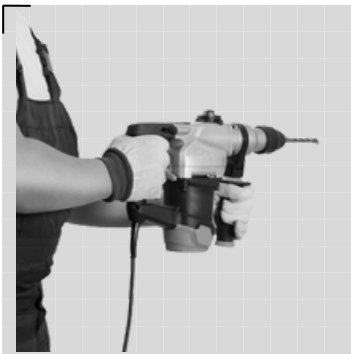
002 Use a stud finder and pencil to mark the studs.



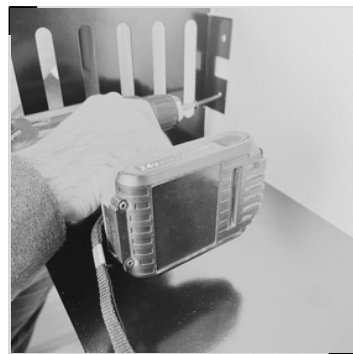
003 Please make sure that the nightstand is level using a spirit level.



004 Mark the hole positions on the bracket and ensure it is secured to at least one stud.



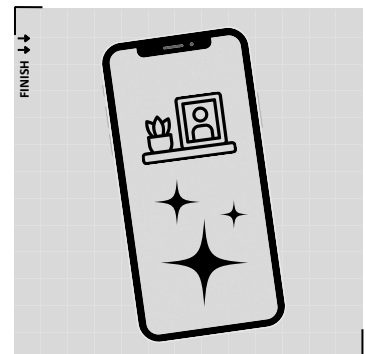
005 If you're not mounting the nightstand a stud, use wall anchors. Drill holes based on your wall type (drywall: 8.5mm, masonry: 8mm) and insert the anchors.



006 Secure the nightstand to the wall using screws appropriate for your wall type.



007 You have successfully completed the installation process. Your product is now ready to use.



008 Share a picture with us on Instagram at [@hofinashop](https://www.instagram.com/hofinashop) for a chance to win some awesome prizes!