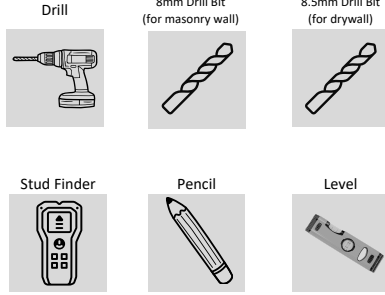


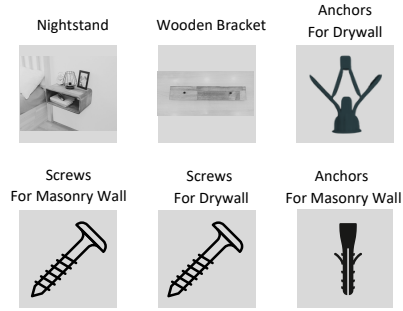
Hofina Nightstand Install Guide



Required Installation Tools:



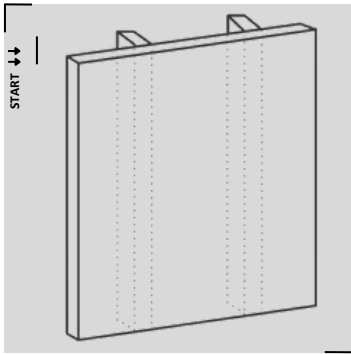
What's Included:



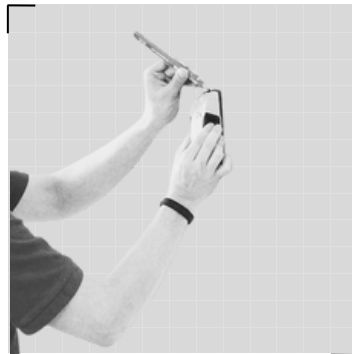
Still Need Help?

If you have any questions regarding the installation, please do not hesitate to contact us.

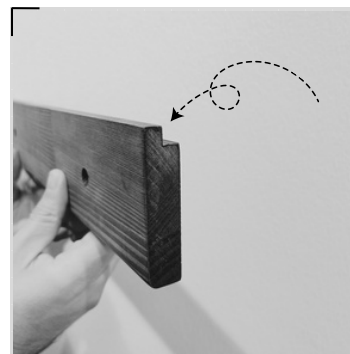
✉ info@hofina.com
 📷 [@hofinashop](https://www.instagram.com/hofinashop)



001 First: Determine your desired location for your nightstand.



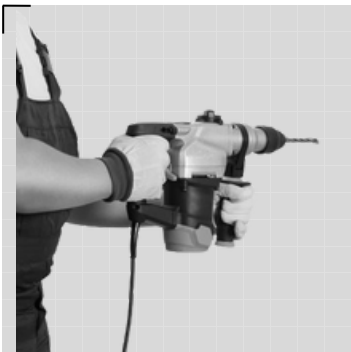
002 Use a stud finder and pencil to mark the studs.



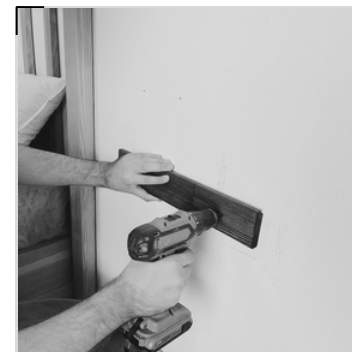
003 Please make sure that the notched part is at the top and on the side facing the wall.



004 Make sure the bracket is level using a spirit level. Mark the hole positions on the bracket and ensure it is secured to at least one stud.



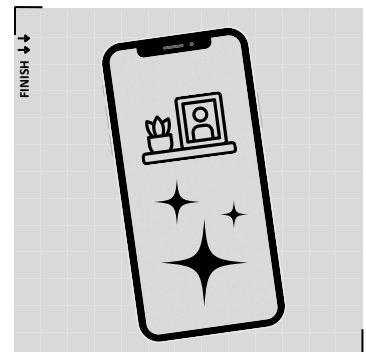
005 If you're not mounting the bracket to a stud, use wall anchors. Drill holes based on your wall type (**drywall: 8.5mm, masonry: 8mm**) and insert the anchors.



006 Secure the bracket to the wall using screws appropriate for your wall type.



007 Place the nightstand onto the bracket's notch.



008 Congratulations! You've completed the project and deserve all the praise. Share a picture with us on Instagram at [@hofinashop](https://www.instagram.com/hofinashop) for a chance to win some awesome prizes!