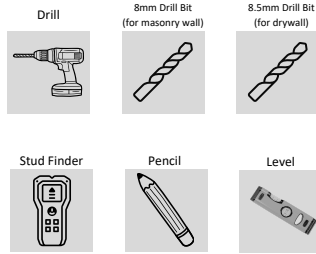


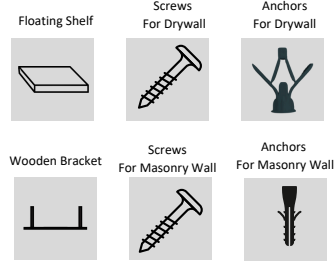
Hofina Thick Shelf Install Guide



Required Installation Tools:



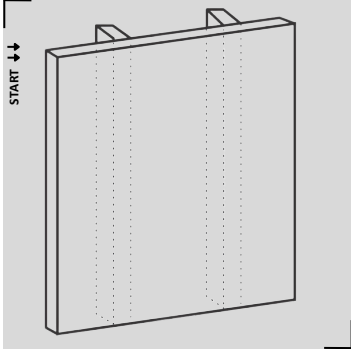
What's Included:



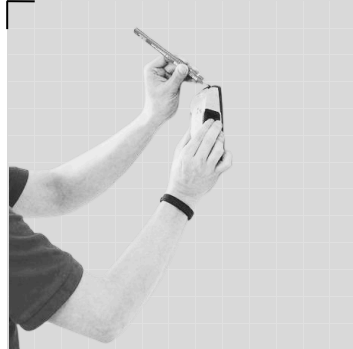
Still Need Help?

If you have any questions regarding the installation, please do not hesitate to contact us.

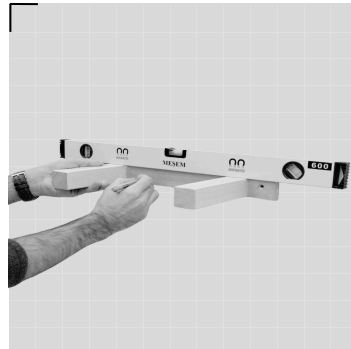
✉ info@hofina.com
 📷 [@hofinashop](https://www.instagram.com/hofinashop)



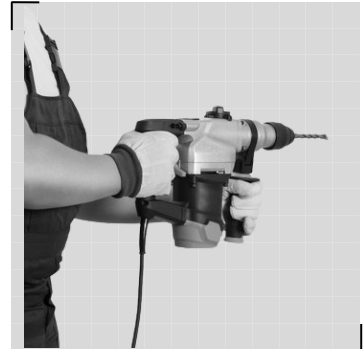
001 First: Determine your desired location for your shelf.



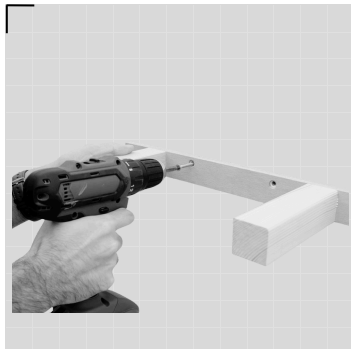
002 Mark the studs with the help of a pencil and a stud finder.



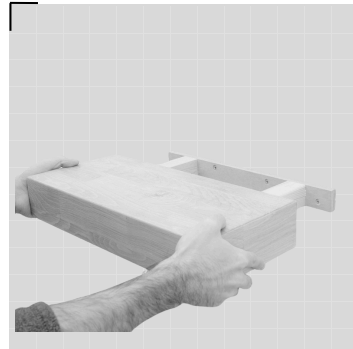
003 Please ensure the bracket is level using a spirit level. Mark the locations of the holes on the bracket and make sure to secure it to at least one stud.



004 If you are not mounting the bracket to a stud, you will need to use wall anchors. Drill holes suitable for your wall type (**drywall: 8.5mm, masonry wall: 8mm**) and insert the anchor.



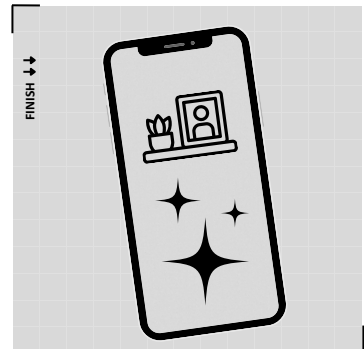
005 Secure your shelf to the wall using the screws suitable for your wall type.



006 Slide your shelf onto the bracket.



007 You're ready to style! Floating shelves look great as bookshelves or as displays for photos or keepsakes.



008 It's time to celebrate you and your project's innate awesomeness! You finished this project and deserve heaps of adulation. Send us a picture on Instagram to: [@hofinashop](https://www.instagram.com/hofinashop). Warning: rad prizes may apply!

Rad Tips

① Plum, Square & Level

If your wall is not straight, use shims to ensure your bracket is installed straight across the wall face and square to the wall. The shelf & bracket will properly mate only if the bracket is straight and plum.

Your shelf should be level from front edge to the wall. If the shelf is still sagging, use shims to adjust the level of the bracket.

② Studs & Blocking

Studs are the vertical 2x4 boards that make up the bones of your walls. They provide solid structure for your shelves to attach to. Blocking is typically added later between studs in the wall for additional support to mount shelves or hook to, and is usually made from 2x4 or 2x6 lumber.

③ Brackets

Your shelf is designed to fit tight, so it may require additional force when sliding your shelf onto the bracket. If your shelf won't go in all the way, consider the following:

1. Tap the shelf into place using a rubber mallet (protect it with a thick cloth or towel first).

2. Force the shelf on by wiggling up and down and side to side while pushing it against the wall.